



OUTDOOR HARSH ETERNALIGHT 3

SPECIFICATIONS

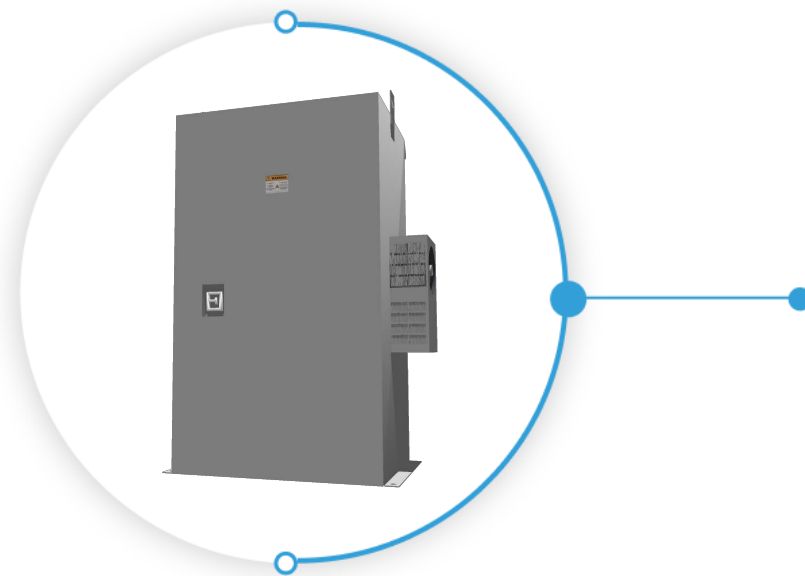
- The Outdoor Harsh Eternalight 3 maintains efficient AC Emergency Power to operate all emergency lighting fixtures at "full-light" output, providing superior dependability and security to commercial/industrial environments in an outdoor environment.

POWER RATING

- 3 KW - 30 KW (or 3,000 Watts - 30,000 Watts) three phase output unit uses the latest DSP/PWM technology to provide the most advanced performance and reliability features

DIAGNOSTICS AND MAINTENANCE

- DSP/PWM technology and DSPM Watchdog Software provides complete self diagnostic capabilities and LED Monitoring
- Informative advanced Display and Alarms keep you in control of your emergency lighting environment 24/7
- Automatically performs periodic self-tests ensuring a safely lighted environment prior to an emergency
- Single point of testing instead of multiple testing points with battery packs



3 KW - 30 KW
 Three Phase
 Uninterrupted
 Emergency
 Lighting and
 Power
 Systems

PROTECTION

- Provides overload, surge and undercurrent protection using DSP/PWM technology and DSPM Watchdog Software to protect system performance and reliability
- Surge protection against load surges as defined in ANSI/IEEE C62.45 category A and B

INPUT

- 208Y/120, 480Y/277, 208 or 480VAC input 60Hz

OUTPUT

- 208Y/120 or 480Y/277VAC True "on-line" design is $\geq 92\%$ efficient at 100% linear load

BATTERIES

- Sealed, maintenance-free, lead calcium (AGM) batteries
- 10-Year prorated warranty
- DSP/PWM Smart Battery Monitoring System is TEMPERATURE COMPENSATED maintaining maximum runtime and battery life
- Microprocessor controlled recharge and DSP/PWM over-charge protection standard

LAMPS AND LOADS

- Emergency power provides FULL LIGHT OUTPUT from all lamps and fixtures for the entire runtime
- Operates fluorescent, compact fluorescent, incandescent, quartz, H.I.D., LED and other lamp types
- Standard or electronic ballasts, dimming devices or panels, sensors and most control equipment
- Standard or LED Exits and other safety equipment

WARRANTY

- 1-Year full warranty on system electronics
- Battery warranty 1-year with 9-years pro-rated
- System 1-year on-site warranty labor with DSPM phone assisted start-up
- 5-Year powertrain warranty
- Maintenance contracts available

CODES

- Built to UL 924 and UL 1778 standards, meets NFPA 101, NFPA 70, NEC and OSHA standards
- Cities of Chicago and New York approved
- Complies with the Buy American Act

INSTALLATION

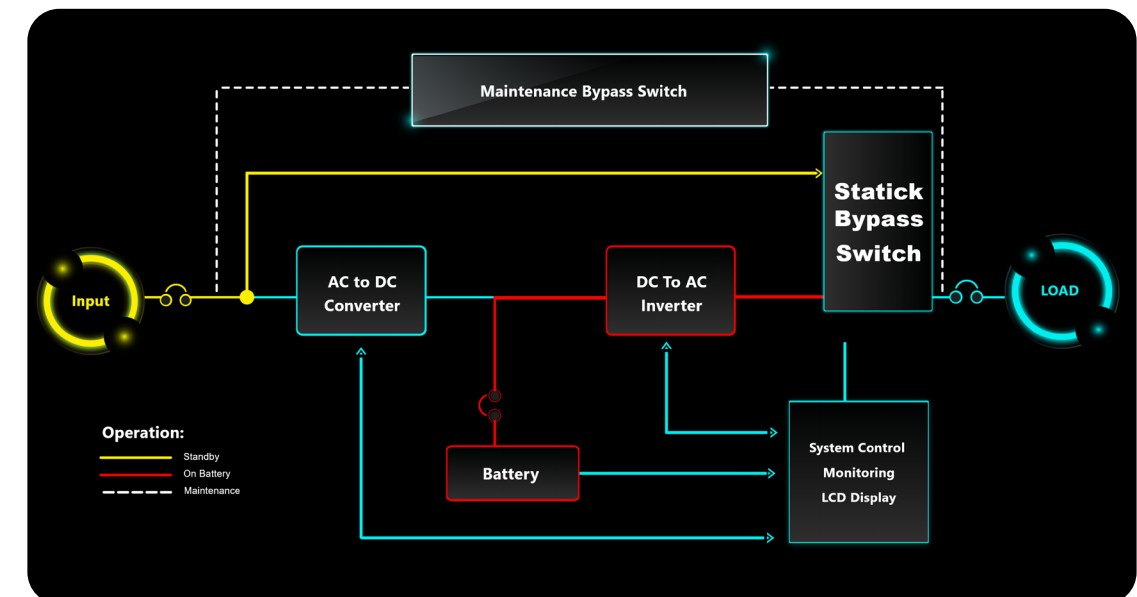
- Modular design and small footprint allow easy installation in an outdoor environment
- Phone assisted factory start-up standard for all systems
- Extended warranty available

SPECIAL APPLICATIONS

- DSPM offers numerous UL924 optional devices to meet unusual or difficult application parameters
- ECM - Environmental Circuit Module allows fixtures and lamps on the emergency circuit(s) to be operated by normal switching and/or dimming devices in NON-emergency conditions
- Dimming Panel Interface allows use with emergency lights controlled by common dimmer panel

NEMA 4 or 12 CABINET

- Modular design enables flexible installation
- Forced air cooling for maximum reliability
- Systems up to 10 KW are self contained; larger systems require external battery cabinet(s)



ELECTRICAL SPECIFICATIONS

Input Voltage Range	+10% , -15%
Output Voltage Regulation	±3% for all loads and battery discharge mode
Output Frequency Range	60 Hz, ±1%
Output Wave Form	Sine-wave <5% @ 100% linear load
Crest Factor	2.5:1 typical
Input Protection	Input Main Circuit Breaker
Output Protection	Output Main Circuit Breaker
Surge Protection	The unit will protect itself and the load against surges as defined in ANSI/IEEE C62.45 category A and B
Efficiency	≥92% at 100% linear load
Audible Noise	<45dB measured on Response Curve "A"
Operating Temperature	-20° to 50°C (32° to 104°F)
Storage Temperature	-20° to 60°C (-4° to 140°F)
Humidity	5 - 100%, Non-condensing
Cabinet	NEMA 4, NEMA 4X, NEMA 12

Eternalight Harsh 3	Power Ratings	UPS			Battery			Weight (Combined)	British Thermal Unit	Battery Type	Voltage (VAC)		Output Protection	Safety Approvals
		Cabinet Dimentions			Cabinet Dimentions						Input	Output		
OTH3 (Consult factory for other capabilities)	KVA/Kw	W	H	D	W	H	D	(lbs)	BTU s	Sealed, Maintenance free (AGM) lead calcium	Select 208Y/120VAC, 480Y/277VAC, 208 or 480VAC (Consult factory for others)	Input and output circuit breakers standard	UL924 UL1778 NFPA 101 NFPA 70 NEC	
	3	(41+6)"	(72+4)"	36"	not required			1730	816					
	4.5	(41+6)"	(72+4)"	36"	not required			1850	1224					
	6	(41+6)"	(72+4)"	36"	not required			2100	1632					
	8	(41+6)"	(72+4)"	36"	not required			2450	2176					
	10	(41+6)"	(72+4)"	36"	not required			3000	2720					
	12	(41+6)"	(72+4)"	36"	(41+6)"	(48+4)"	36"	3450	3264					
	16	(41+6)"	(72+4)"	36"	(41+6)"	(72+4)"	36"	3700	4352					
	20	(41+6)"	(72+4)"	36"	(41+6)"	(72+4)"	36"	4550	5440					
	24	Consult Factory							6528					
30	Consult Factory							8160						

We sincerely hope you never experience a real emergency, but if you do, you deserve the **security, safety and peace of mind** that the Outdoor Harsh Eternalight 3 from **DSPM** ensures.

ORDERING INFORMATION

Choose the bold face catalog nomenclature that best suites your needs. Write them on the appropriate line. Order accessories as separate catalog number. Example:
OTH3 - 12.0 - 208Y/120 208Y/120 - EMB OCB/120/3/20/1 - 240
Description of example:

(12.0 KW, 208Y/120 Voltage In, 208Y/120 Voltage Out, External Maintenance Bypass Switch, 3 Output 120 Voltage Circuit Breakers at 20amps,

OTH3				
FAMILY	POWER RATING	VOLTAGE ¹	OPTIONS	TIME ³
	<u>KW</u>	<u>Input/Output</u>	<u>ECM120</u> - 120V Environmental control module ² / qty	<u>Minutes</u>
	3.0	208Y/120 - 208Y/120	<u>ECM277</u> - 277V Environmental control module ² / qty	5
	4.5	208Y/120 - 480Y/277	<u>NOF</u> - Normally OFF output circuit/voltage/ qty/pole	10
	6.0	480Y/277 - 208Y/120	<u>NOH</u> - Normally OFF "Hold ON"/voltage/qty/pole	15
	8.0	480Y/277 - 480Y/277	<u>OCB</u> - Output circuit breakers / voltage / quantity/amps/pole	20
	10.0	208 - 208Y/120	<u>EPO</u> - Emergency power off	25
	12.0	208 - 480Y/277	<u>RSSP</u> - Remote Indicator Panel	30
	16.0	480 - 208Y/120	<u>SNMP</u> - SNMP Card	45
	20.0	480 - 480Y/277	<u>FC</u> - Form C Contacts	60
	24.0		<u>STU3</u> - Onsite start-up	90 (Standard)
	30.0		<u>IDB</u> - Internal dimmer bypass	120
			<u>EMB</u> - External maintenance bypass switch	180
			<u>HTR</u> - Heater	240
			<u>EW</u> - Extended warranty	

NOTES:

- 1-Consult factory for other voltage requirements. Special voltages may effect the weight, size and number of cabinets.
- 2-One ECM is used per switching device or circuit.
- 3-Consult factory for other run times.

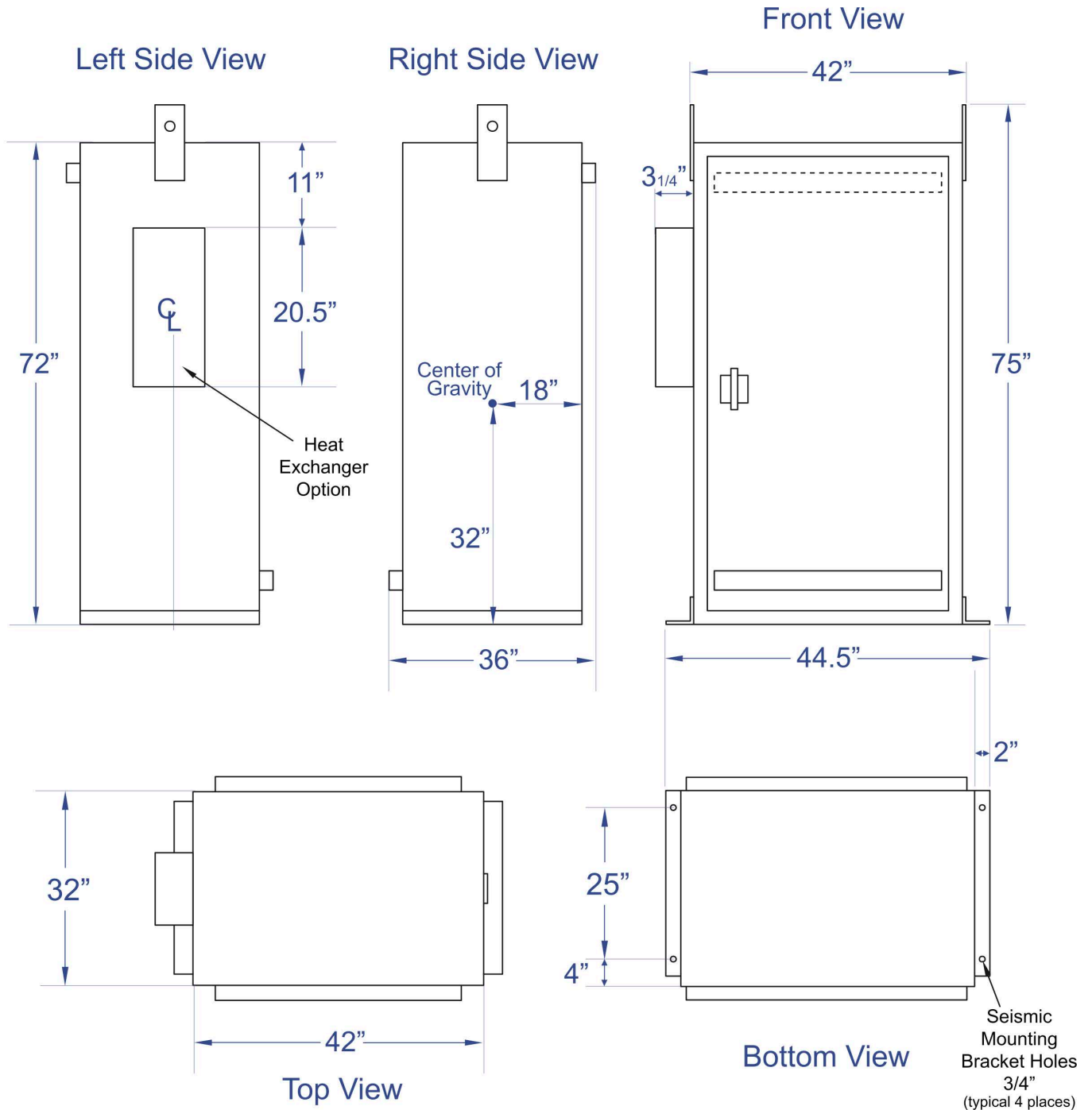
Specifications subject to change without notice.



439 S. Stoddard Avenue San Bernardino, CA 92401

Ph: 1.877.DSPM POWER 1.877.377.6769 Fax: 909.930.3335

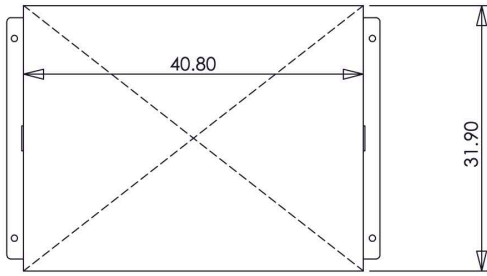
MECHANICAL FOOTPRINT



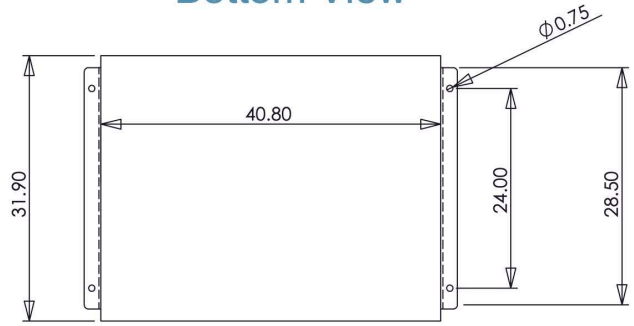
Per code requirements please leave 3" on each side of the cabinet including the back, and a 3 foot clearance in front.

Notice: This drawing contains confidential and proprietary data originated. All design, manufacturing, reproduction, use and sale rights are expressly reserved. The recipient agrees by accepting this document, not to supply or disclose and information regarding it to any unauthorized person, or to incorporate this data into any other design or use thereof. All patent rights are expressly reserved.

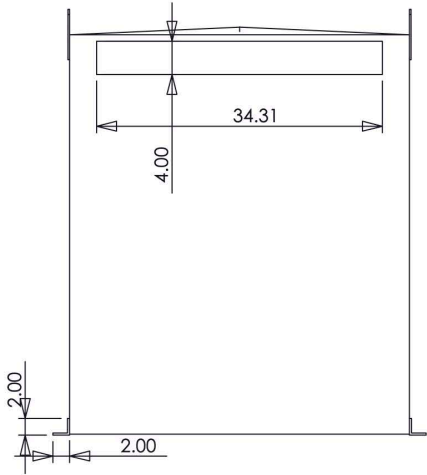
Top View



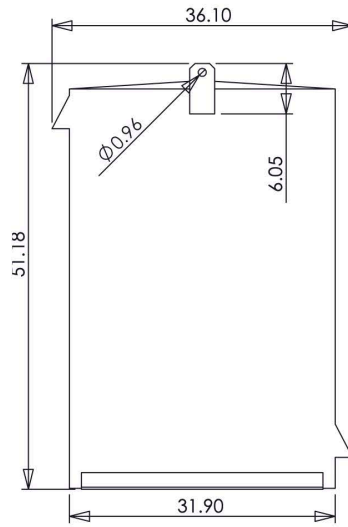
Bottom View



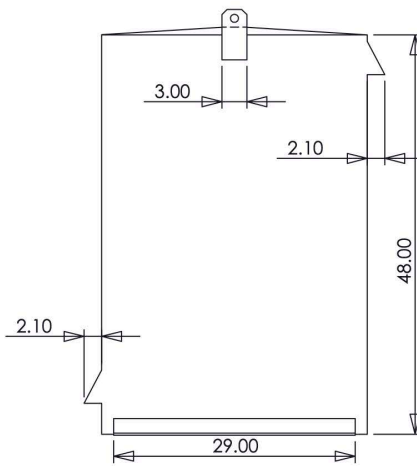
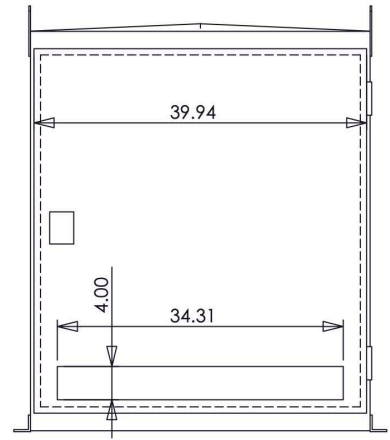
Back View



Side View



Front View



Side View