



OUTDOOR HARSH ETERNALIGHT 1

SPECIFICATIONS

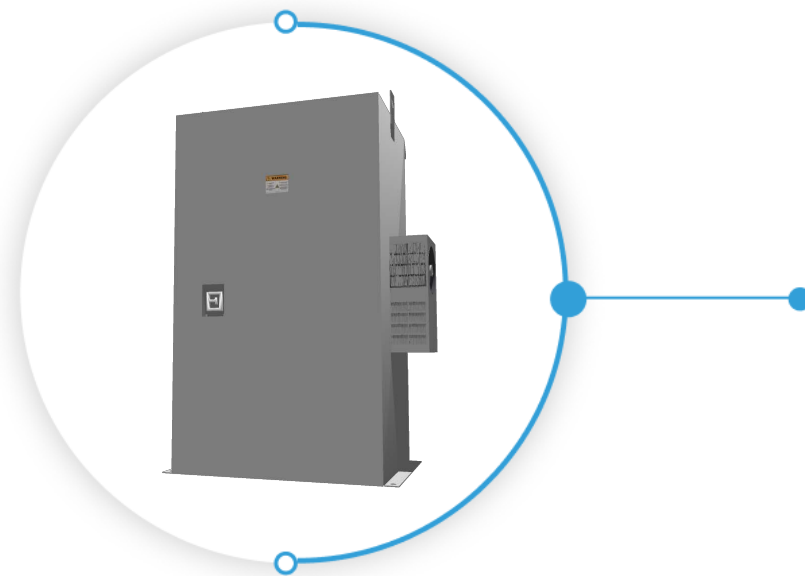
- The Outdoor Harsh Eternalight 1 maintains efficient AC Emergency Power to operate all emergency lighting fixtures at "full-light" output, providing superior dependability and security to commercial/industrial environments in an outdoor environment.

POWER RATING

- 0.075 KW - 21 KW (or 75 Watts - 21,000 Watts) single phase output unit uses the latest DSP/PWM technology to provide the most advanced performance and reliability features

DIAGNOSTICS AND MAINTENANCE

- DSP/PWM technology and DSPM Watchdog Software provides complete self diagnostic capabilities and LED Monitoring
- Informative advanced Display and Alarms keep you in control of your emergency lighting environment 24/7
- Automatically performs periodic self-tests ensuring a safely lighted environment prior to an emergency
- Single point of testing instead of multiple testing points with battery packs



0.075 KW - 21 KW
Single Phase
Uninterrupted
Emergency
Lighting and
Power
Systems

PROTECTION

- Provides overload, surge and undercurrent protection using DSP/PWM technology and DSPM Watchdog Software to protect system performance and reliability
- Surge protection against load surges as defined in ANSI/IEEE C62.45 category A and B

INPUT

- 120V, 208V, 240V, 277V or 480V input 60Hz

OUTPUT

- 120V, 240V, 277V, 480V, 120/240 or 120/277VAC True "on-line" design is $\geq 92\%$ efficient at 100% linear load

BATTERIES

- Sealed, maintenance-free, lead calcium (AGM) batteries
- 10-Year prorated warranty
- DSP/PWM Smart Battery Monitoring System is TEMPERATURE COMPENSATED maintaining maximum runtime and battery life
- Microprocessor controlled recharge and DSP/PWM overcharge protection standard

LAMPS AND LOADS

- Emergency power provides FULL LIGHT OUTPUT from all lamps and fixtures for the entire runtime
- Operates fluorescent, compact fluorescent, incandescent, quartz, H.I.D., LED and other lamp types
- Standard or electronic ballasts, dimming devices or panels, sensors and most control equipment
- Standard or LED Exits and other safety equipment

WARRANTY

- 1-Year full warranty on system electronics
- Battery warranty 1-year with 9-years pro-rated
- System 1-year on-site warranty labor with DSPM phone assisted start-up
- 5-Year powertrain warranty
- Maintenance contracts available

CODES

- Built to UL 924 and UL 1778 standards, meets NFPA 101, NFPA 70, NEC and OSHA standards
- Cities of Chicago and New York approved
- Complies with the Buy American Act

INSTALLATION

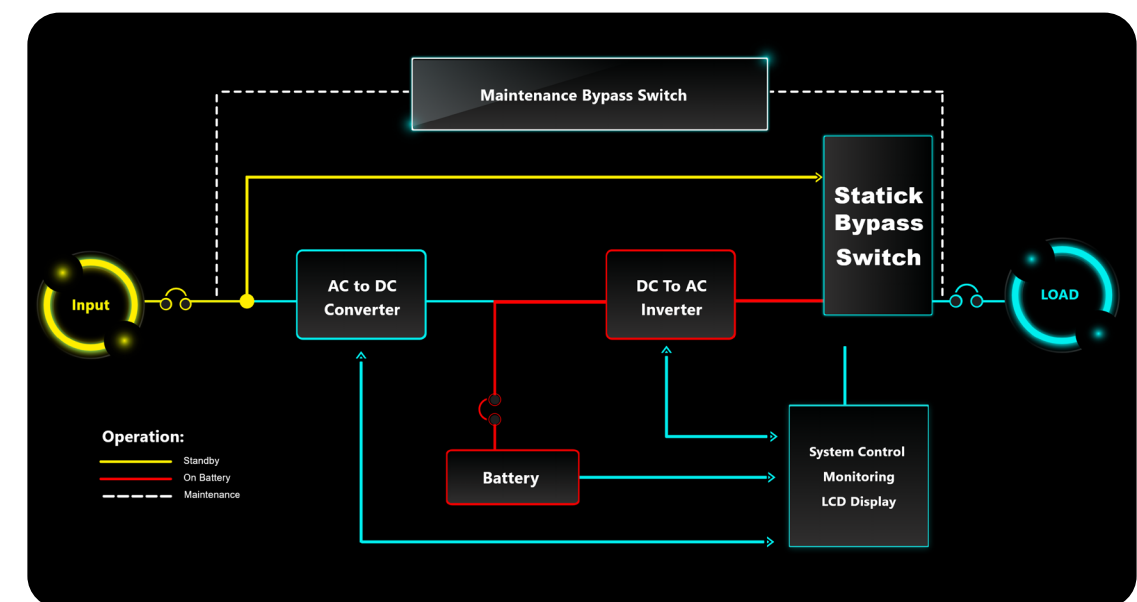
- Modular design and small footprint allow easy installation in electrical closet or other convenient locations
- Phone assisted factory start-up standard for all systems
- Extended warranty available

SPECIAL APPLICATIONS

- DSPM offers numerous UL924 optional devices to meet unusual or difficult application parameters
- ECM - Environmental Circuit Module allows fixtures and lamps on the emergency circuit(s) to be operated by normal switching and/or dimming devices in NON-emergency conditions
- Dimming Panel Interface allows use with emergency lights controlled by common dimmer panel

NEMA 4 or 12 CABINET

- Modular design enables flexible installation
- Forced air cooling for maximum reliability
- Systems up to 12 KW are self contained; larger systems require external battery cabinet(s)



ELECTRICAL SPECIFICATIONS

Input Voltage Range	+10% , -15%
Output Voltage Regulation	±3% for all loads and battery discharge mode
Output Frequency Range	60 Hz, ±1%
Output Wave Form	Sine-wave <5% @ 100% linear load
Crest Factor	2.5:1 typical
Input Protection	Input Main Circuit Breaker
Output Protection	Output Main Circuit Breaker
Surge Protection	The unit will protect itself and the load against surges as defined in ANSI/IEEE C62.45 category A and B
Efficiency	≥92% at 100% linear load
Audible Noise	<45dB measured on Response Curve "A"
Operating Temperature	-20° to 50°C (32° to 104°F)
Storage Temperature	-20° to 60°C (-4° to 140°F)
Humidity	5 - 100%, Non-condensing
Cabinet	NEMA 4, NEMA 4X, NEMA 12

Eternalight Harsh 1	Power Ratings	UPS			Battery			Weight (Combined)	British Thermal Unit	Battery Type	Voltage (VAC)		Output Protection	Safety Approvals
		Cabinet Dimensions			Cabinet Dimensions						Input	Output		
	KVA/Kw	W	H	D	W	H	D	(lbs)	BTU s					
OTH1 (Consult factory for others)	0.35	(41+6)"	(48+4)"	36"	not required			950	95.2	Sealed, Maintenance free (AGM) lead calcium	Select 120, 208, 240, 277 or 480	Select 120, 277, 480, 120/240 or 120/277	Input and output circuit breakers standard	UL924 UL1778 NFPA 101 NFPA 70 NEC
	0.525	(41+6)"	(48+4)"	36"	not required			1140	142.8					
	0.7	(41+6)"	(48+4)"	36"	not required			1170	190.4					
	0.875	(41+6)"	(48+4)"	36"	not required			1190	238					
	1.05	(41+6)"	(48+4)"	36"	not required			1220	285.6					
	1.4	(41+6)"	(48+4)"	36"	not required			1350	380.8					
	2	(41+6)"	(48+4)"	36"	not required			1410	544					
	2.4	(41+6)"	(48+4)"	36"	not required			1460	652.8					
	2.6	(41+6)"	(48+4)"	36"	not required			1620	707.2					
	3	(41+6)"	(48+4)"	36"	not required			1730	816					
	3.4	(41+6)"	(48+4)"	36"	not required			1780	924.8					
	3.8	(41+6)"	(48+4)"	36"	not required			1830	1033.6					
	4.2	(41+6)"	(48+4)"	36"	not required			1980	1142.4					
	4.7	(41+6)"	(48+4)"	36"	not required			2350	1278.4					
	5.25	(41+6)"	(48+4)"	36"	not required			2350	1428					
	7	(41+6)"	(72+4)"	36"	not required			2600	1904					
	8	(41+6)"	(72+4)"	36"	not required			2600	2176					
	10	(41+6)"	(72+4)"	36"	not required			3050	2720					
	12	(41+6)"	(72+4)"	36"	not required			3050	3264					
	14	(41+6)"	(72+4)"	36"	(41+6)"	(72+4)"	36"	3700	3808					
	18	(41+6)"	(72+4)"	36"	(41+6)"	(72+4)"	36"	4900	4896					
21	(41+6)"	(72+4)"	36"	(41+6)"	(72+4)"	36"	5300	5712						

ORDERING INFORMATION

Choose the bold face catalog nomenclature that best suites your needs.

Write them on the appropriate line. Order accessories as separate catalog number.

Example:

OTH1 - 8.0 - 120/277 - ECM277/3 OCB/277/3/20/1 - 180

Description of example:

(8.0 KW, 120 Voltage In, 277 Voltage Out, 3 277V Environmental Control Modules, 3 Output 277 Voltage Circuit Breakers at 20amps, 2 pole, 180 minute run time)

OTH1		POWER RATING		VOLTAGE ¹		OPTIONS		TIME ³
FAMILY	KW	Input/Output	Input/Output	ECM120 - 120V Environmental control module ² /qty	ECM277 - 277V Environmental control module ² /qty	Minutes		
	0.075	3.0	120/120	277/120	NOF - Normally OFF output circuit/voltage / qty/pole	5		
	0.1	3.4	120/277	277/277	NOH - Normally OFF "Hold ON"/voltage/qty/pole	10		
	0.125	3.8	120/480	277/480	OCB - Output circuit breakers /voltage/ quantity/amps/pole	15		
	0.2	4.2	120/120-240	277/120-240	EPO - Emergency power off	20		
	0.3	4.7	120/120-277	277/120-277	RSSP - Remote Indicator Panel	25		
	0.35	5.25	208/120	480/120	SNMP - SNMP Card	30		
	0.525	7.0	208/277	480/208	FC - Form C Contacts	45		
	0.7	8.0	208/480	480/277	STU1 - Onsite start-up	60		
	0.875	10.0	208/120-240	480/480	IDB - Internal dimmer bypass	90 (Standard)		
	1.05	12.0	208/120-277	480/120-240	EMB - External maintenance bypass switch	120		
	1.4	14.0	240/120	480/120-277	HTR - Heater	180		
	2.0	18.0	240/277		EW - Extended warranty	240		
	2.4	21.0	240/480					
	2.6		240/120-240					
			240/120-277					

NOTES:

1-Consult factory for other voltage requirements.

Special voltages may effect the weight, size and number of cabinets.

2-One ECM is used per switching device or circuit.

3-Consult factory for other run times.

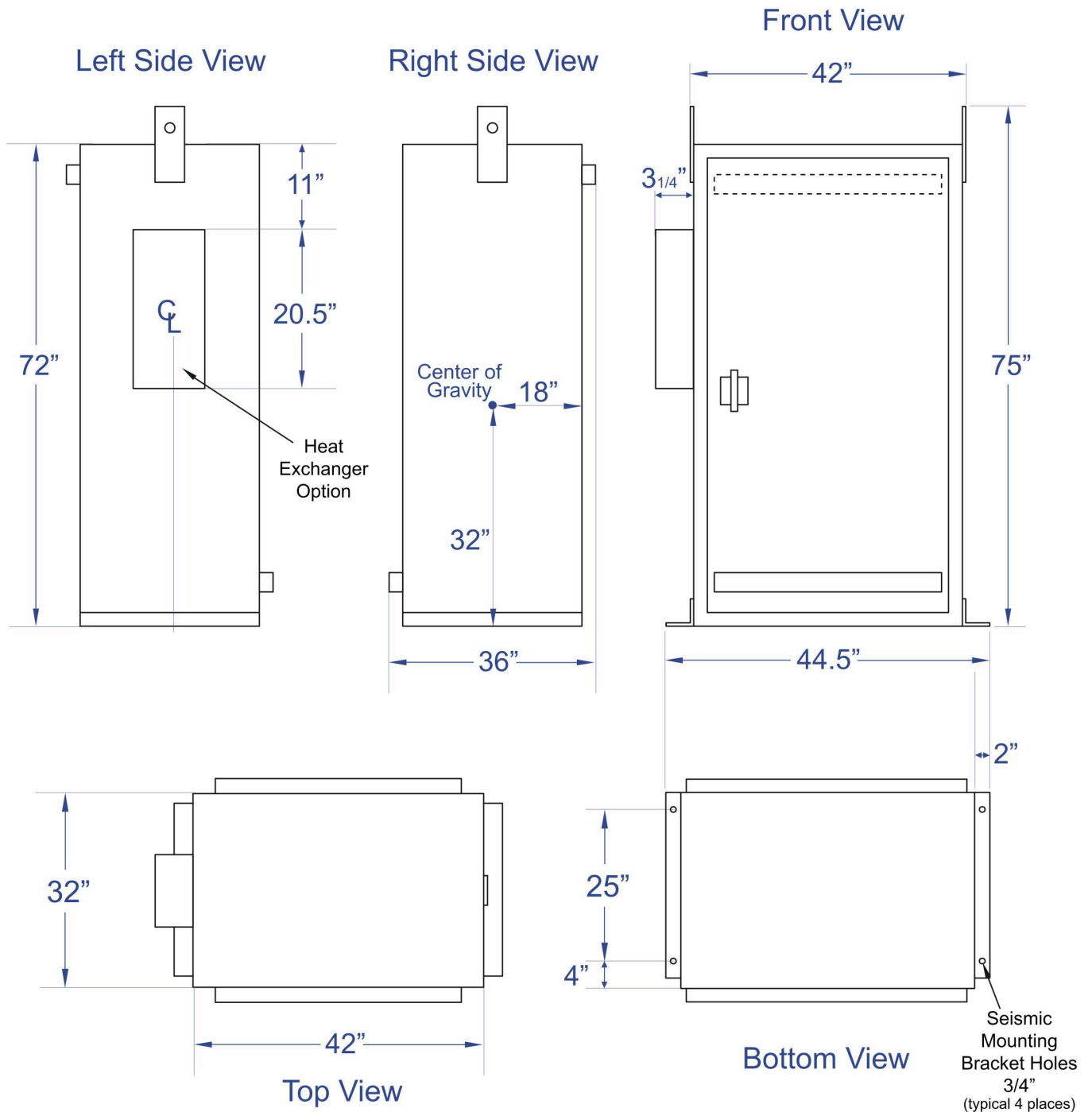
Specifications subject to change without notice.



439 S. Stoddard Avenue San Bernardino, CA 92401

Ph: 1.877.DSPM POWER 1.877.377.6769 Fax: 909.930.3335

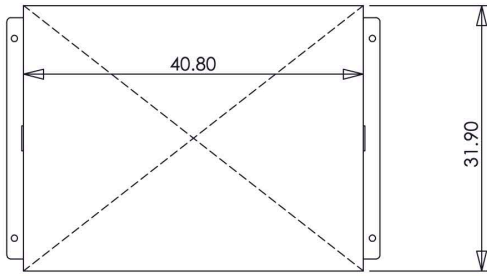
MECHANICAL FOOTPRINT



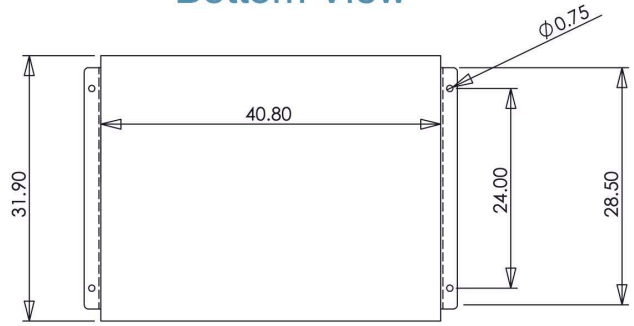
Per code requirements please leave 3" on each side of the cabinet including the back, and a 3 foot clearance in front.

Notice: This drawing contains confidential and proprietary data originated. All design, manufacturing, reproduction, use and sale rights are expressly reserved. The recipient agrees by accepting this document, not to supply or disclose and information regarding it to any unauthorized person, or to incorporate this data into any other design or use thereof. All patent rights are expressly reserved.

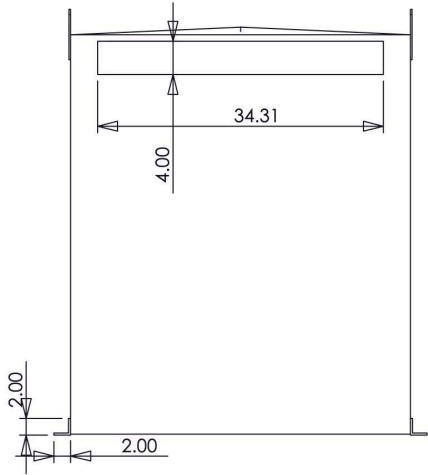
Top View



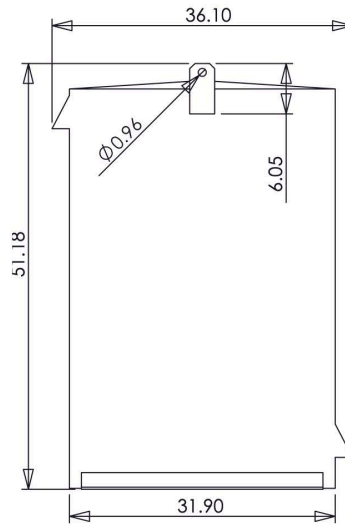
Bottom View



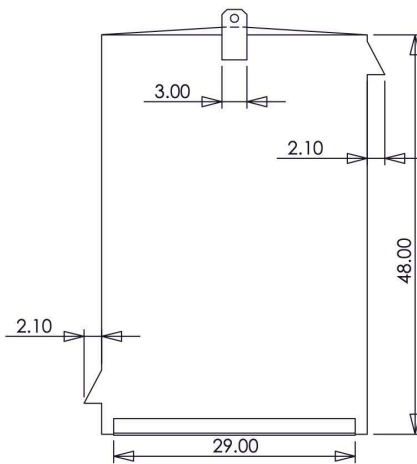
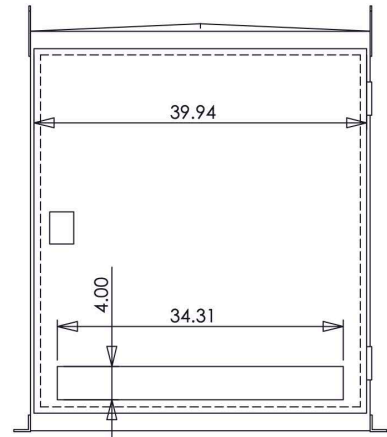
Back View



Side View



Front View



Side View